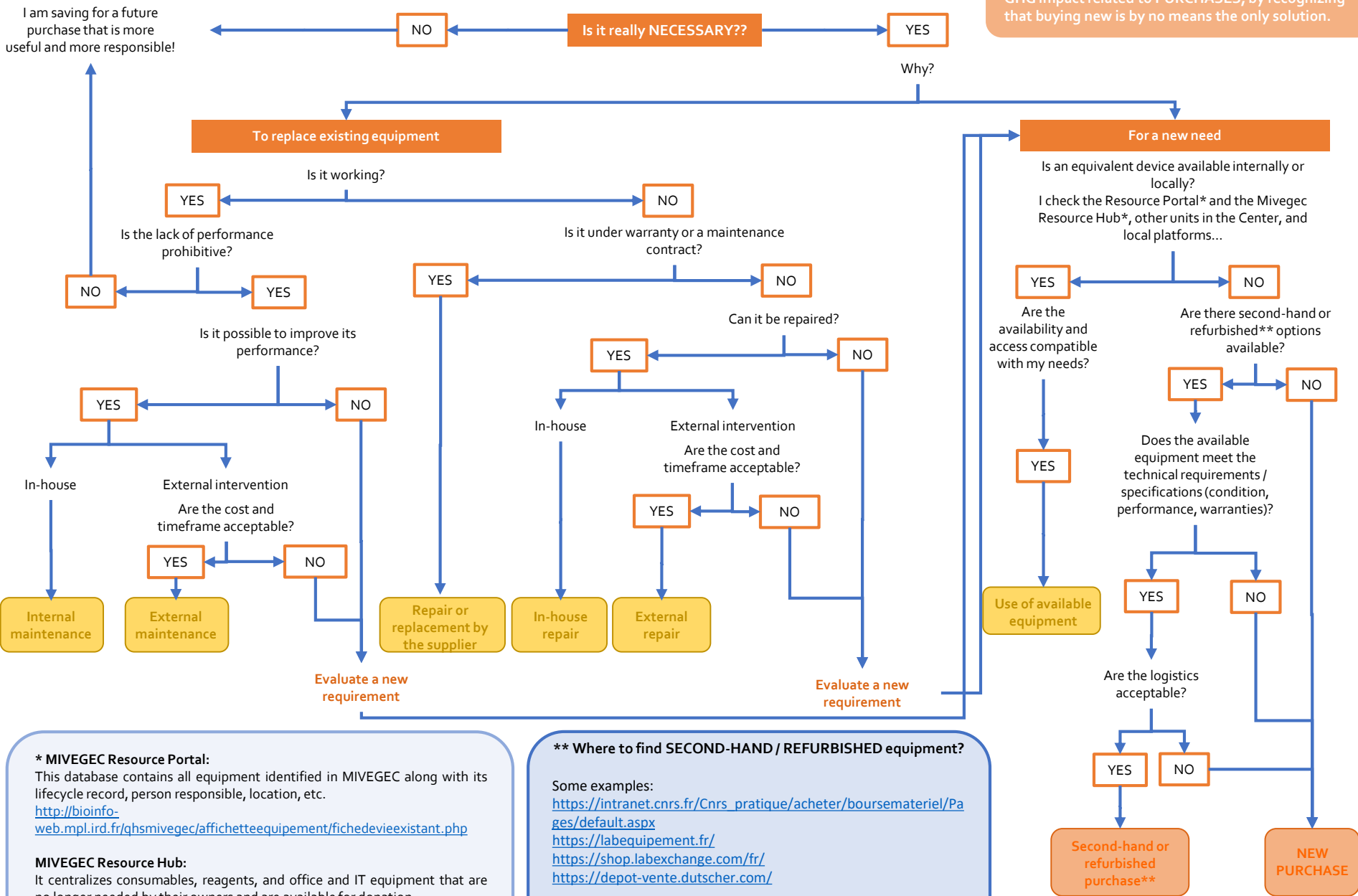


I am about to buy new equipment

This decision tree is not mandatory. It encourages us to question ourselves in order to reduce the unit's GHG impact related to PURCHASES, by recognizing that buying new is by no means the only solution.

I am saving for a future purchase that is more useful and more responsible!



* MIVEGEC Resource Portal:

This database contains all equipment identified in MIVEGEC along with its lifecycle record, person responsible, location, etc.

<http://bioinfo-web.mpl.ird.fr/qhsmivegec/affichageequipement/fichedeviceexistant.php>

MIVEGEC Resource Hub:

It centralizes consumables, reagents, and office and IT equipment that are no longer needed by their owners and are available for donation.

<https://lite.framacalc.org/ov2fvzghld-a72v>

** Where to find SECOND-HAND / REFURBISHED equipment?

Some examples:

https://intranet.cnrs.fr/Cnrs_pratique/acheter/boursemateriel/Pages/default.aspx

<https://labequipement.fr/>

<https://shop.labexchange.com/fr/>

<https://depot-vente.dutscher.com/>

Don't hesitate to ask your supplier for refurbished equipment!