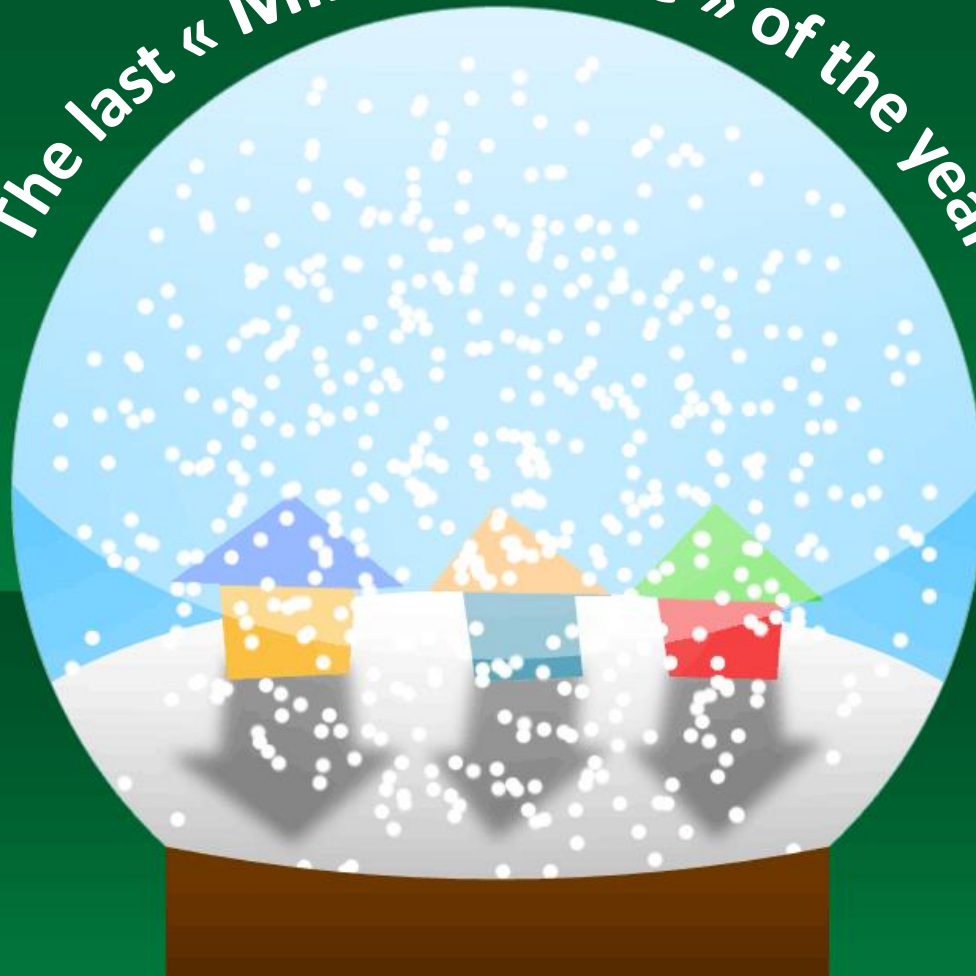


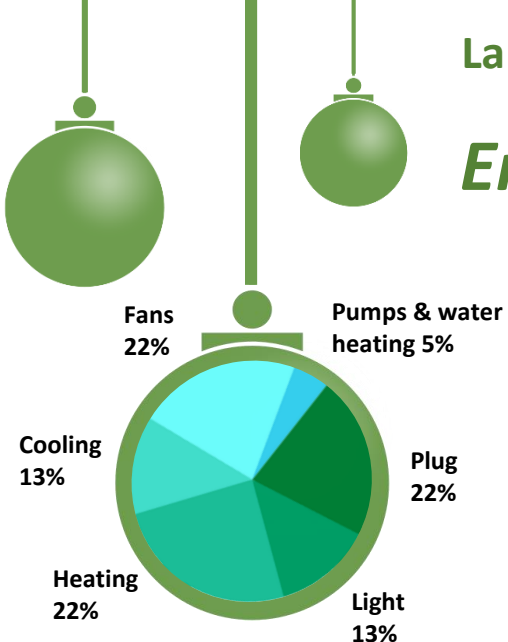
The last « Minute verte » of the year !



Energy in lab and vacation

La « Minute verte » MIVEGEC1point5:

## Energy in lab & vacation



Two weeks before holidays ! So next week :

- ★ Discuss which colleagues will be the **latest** to leave.
- ★ Program which device could be **shut down** and **unplugged**.
- ★ **Unplugged the little freezers** in your offices.
- ★ Switch off the lights (Santa will find the way !).

And just before vacation, **shut down the heater** (if possible).

**Reminder !**  
Standby devices  
consumes **energy** !

**Too cold ?! Don't put the heater up**

It's **Xmas sweater season** : wear the most kitsch and warmest !



*All I want for Xmas,  
is you, shutting down  
devices!*

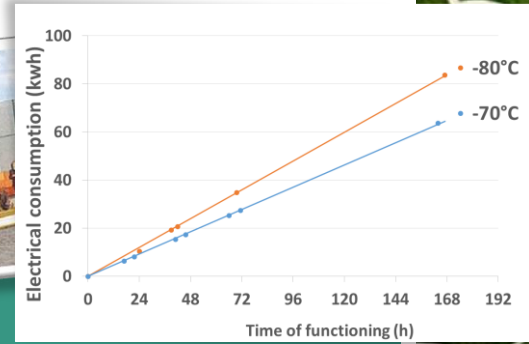


# “-70 is the new -80”

## Benefits :

- Reduce energy consumption by 30-40%
- Extend the life of your freezer

True !



No more drama !



AGAIN !

Okay, but what about my samples ???

IT'S SAFE !!!

One freezer - One year at **-70°C**

=

Reduction of

**142** kgCO<sub>2</sub>e



82 081

km en TGV



763

km en avion



736

km en voiture

[monconvertisseurco2.fr](http://monconvertisseurco2.fr)



# WHAT ARE YOU WAITING FOR?

Ask Mivegec1.5 team for more infos !

A lot of labs & institution such as CDC are now running ULT freezers at -70°C to store samples like **DNA/RNA, bacteria, purified proteins, enzymes** and more.

## *Device in standby in the lab*

### *Did you know that...?*

- A nuclear power station works continuously only for the devices on standby
- Represents 11% of consumption total



### *Few figures for MIVEGEC...?*

- DNA room for 24h all standby devices = 382 W
- For 1 week = 2,6KW
- Worst devices in this room : - Charger for micropipettes  
- Centrifuge

### *Solutions !*

- Switch off device when is not used
- Unplug device

## Heating

### Did you know that...?

**50 %** of energy consumption is linked to heating, in offices (ADEME)

**30 %** of energy consumption is linked to heating in IRD Montpellier



Building poorly isolated (class G) → >2M Euros for an energy renovation! (~ERC)

### Tips:

- Do not over-heat (do not set 25°C in winter and 18°C in summer...)
- Switch off the heater before ventilating your office
- If you ventilate the toilets, please remember to close the window later
- Clear the space in front of the heater to allow a good heat diffusion
- Close the doors connected with no or poorly heated spaces (halls, ...).
- When leaving in the evening, set the heater at a lower temperature (-3°C) without switching it off
- Do not put the air conditioner when it's too hot in the lab (lived):  
contact the room manager



## Energie au bureau : la climatisation

### La climatisation :

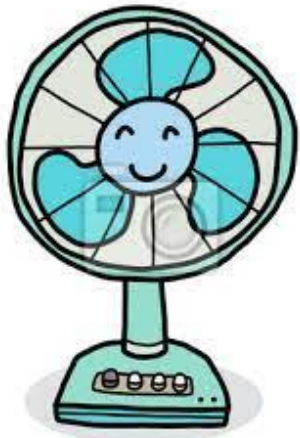
- consomme 20 % d'énergie selon l'ADEME ; 9% à l'IRD
- réchauffe les villes de 0,5 à 2 °C en rejetant de l'air chaud



# Comment conserver la fraîcheur avec des gestes simples ?

- J'aère au maximum le matin lorsqu'il fait frais et crée des circulations d'air en ouvrant les fenêtres  
Indispensable pour renouveler l'air et chasser les polluants !
- Je ferme les fenêtres lorsque la température extérieure monte

J'utilise les protections solaires (stores et volets)



- J'utilise des ventilateurs, moins énergivores

# Si la climatisation est nécessaire, je ménage son usage !

- Je garde les fenêtres fermées la journée



- Je règle au plus bas à 26°C et veille à ne pas dépasser 4°C de différence entre intérieur et extérieur.

Cela évite les chocs thermiques !

- Je coupe la climatisation en partant



**Nous vous souhaitons un été frais au travail !**

